

SATURN webinar, 17th June 2020

1

SATURN

System and sustainable Approach to
virTuous interaction of Urban and Rural
LaNdscapes



Climate-KIC is supported by the
EIT, a body of the European Union

SATURN

System and sustainable Approach to
virTuous interaction of Urban and Rural
LaNdscapes



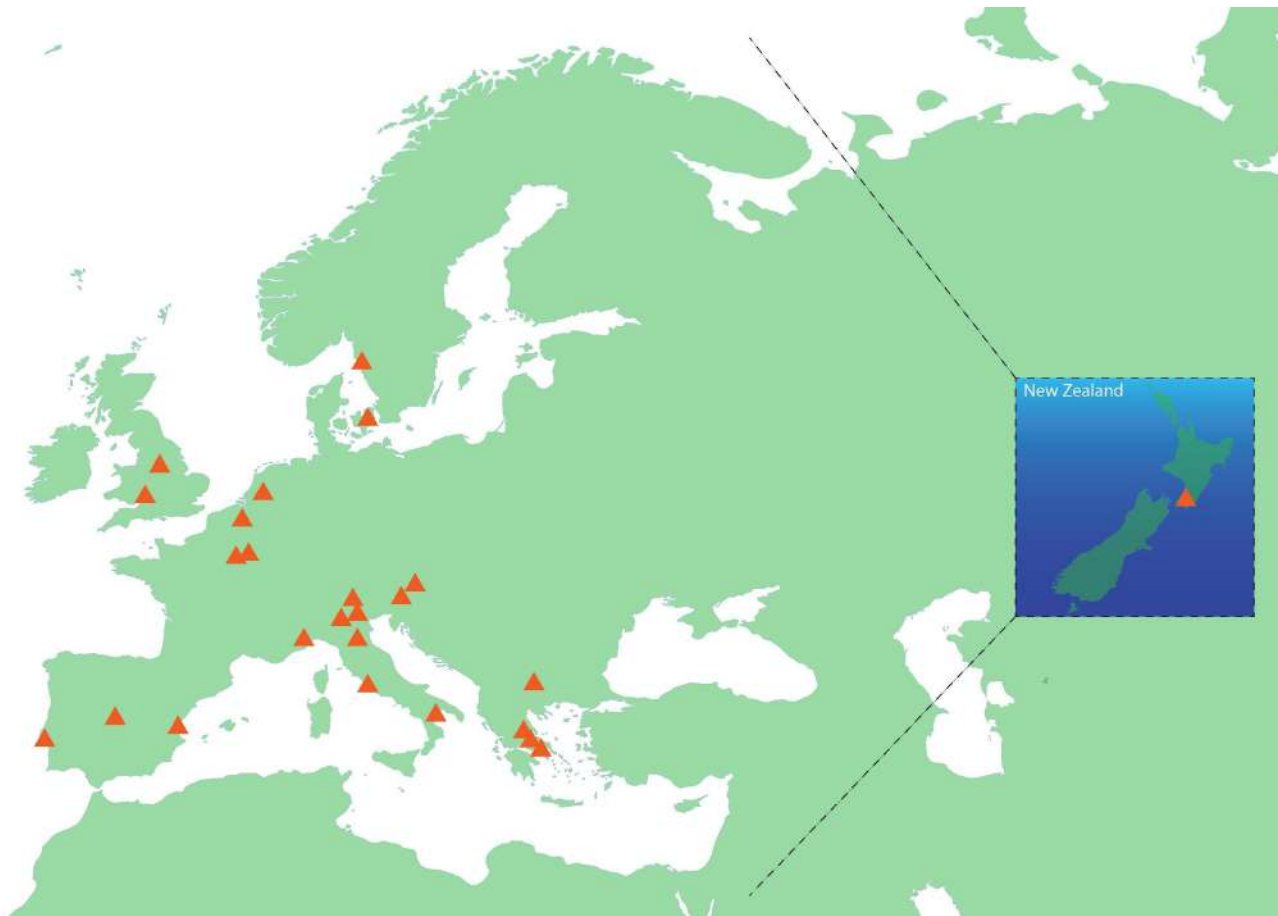
Alessandro Gretter
Edmund Mach Foundation - Italy



Climate-KIC is supported by the
EIT, a body of the European Union

WELCOME & GOOD MORNING
VÄLKOMMEN och GOD DAG!
BENVENUTI e BUON GIORNO

THIS IS OUR JOURNEY TO AND WITH SATURN





EIT Climate-KIC is a European **knowledge and innovation community** working to accelerate the transition to a **zero-carbon economy** through **whole systems** transformation

EIT Climate-KIC is part of the European Institute of Innovation and Technology (EIT) and the EIT community. We are one of eight KICs acting together as global innovation leaders, delivering world-class solutions to societal challenges.

www.climate-kic.org

AGENDA

- *Welcome Speech* – Daniel Zimmer, Director of Sustainable Land Use Theme at EIT Climate-KIC
- *Postcard from Pilot cases* – Moderator: Prof. Sara Favargiotti (University of Trento, Italy)
- *Introducing the WPs* – Moderator: Dr. Anastasia Nikologianni (Birmingham City University, UK)
- *Capacity building support for SATURN theory of change* – Moderator: Valerio Bruschi (EIT Climate-KIC)
- *Open floor discussion* – Moderator: Elisa Morganti (Hub Innovazione Trentino, Italy)

Today, the fragmented landscape management governance leads to uncomplete climate strategies where cities are analysed independently from their natural landscape.

This leads to a bad management of the city surrounding lands which have good carbon sequestration, food and biomass production and risk mitigation potential.

This project aims to reintegrate the natural assets within the city climate change impact strategy and to expand its model by creating a wider initiative.

VISION

“Our vision is to reconnect the landscape how it is now, and to reimagine it to be consistent with the lessons of the past and the challenge of the future”

GOAL

“Our aim is to build a framework that will help the citizens to understand the narrative behind their landscapes”



Thanks for your attention!



climate@fmach.it

<https://eventi.fmach.it/saturn>

<https://www.facebook.com/Saturn.ClimateKIC/>



https://www.instagram.com/saturn_climatekic/



<https://twitter.com/SClimatekic>



SATURN

System and sustainable Approach to
virTuous interaction of Urban and Rural
LaNdscapes



Daniel Zimmer
EIT Climate-KIC

Cities And Rural Landscapes (CARL)

SLU team



CARL: Objective and activities of the programme

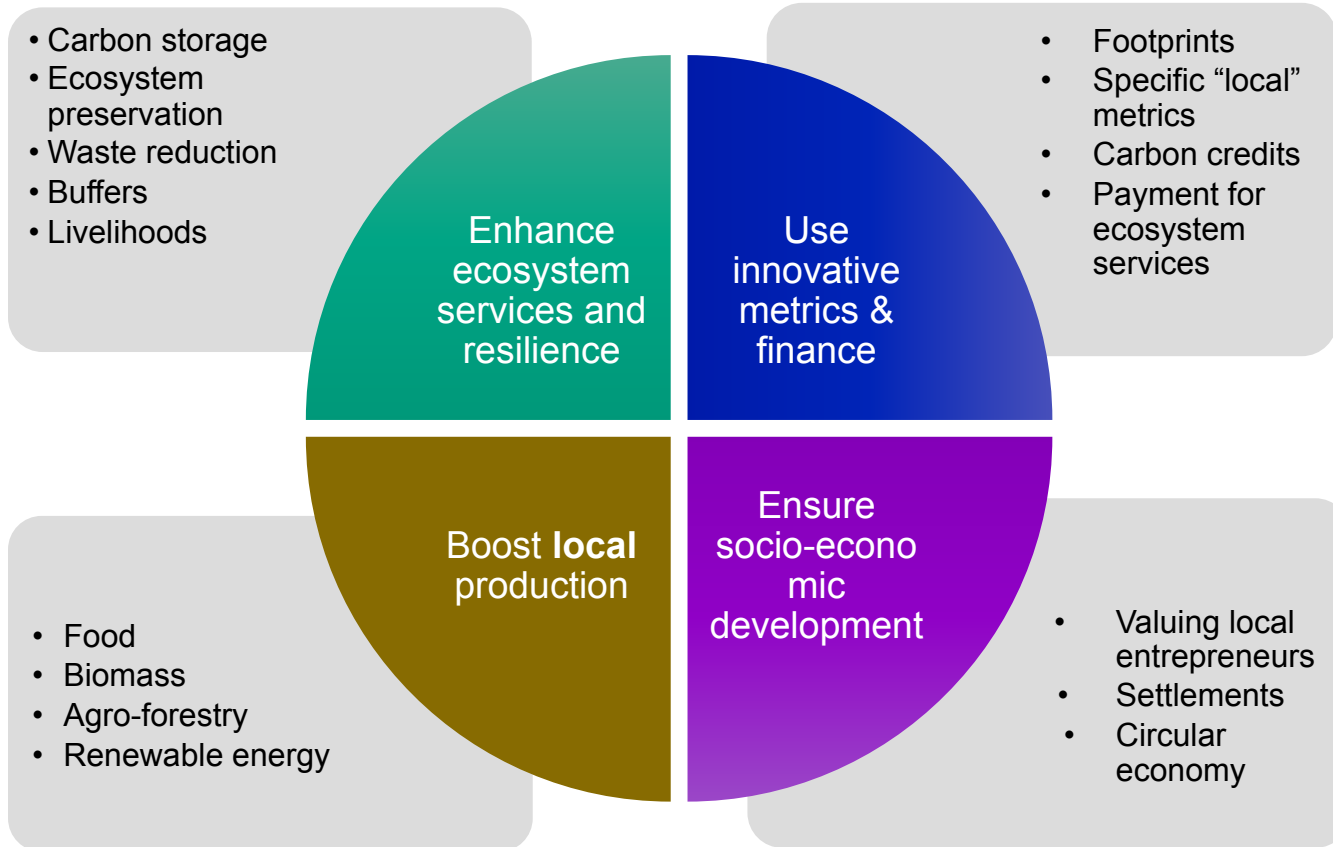
Support cities in their delivery of climate and SDG targets by developing a city-rural coalition and a programme to help cities exchange, synergize and implement concrete solutions

Main activities anticipated:

- Define metrics and guidelines
- Pilot new solutions (using the KIC portfolio of initiatives and developing new ones)
- Develop support tools (e.g. based on carbon finance)
- Connect, share experiences

EIT Climate-KIC wishes to be a catalyser of this programme

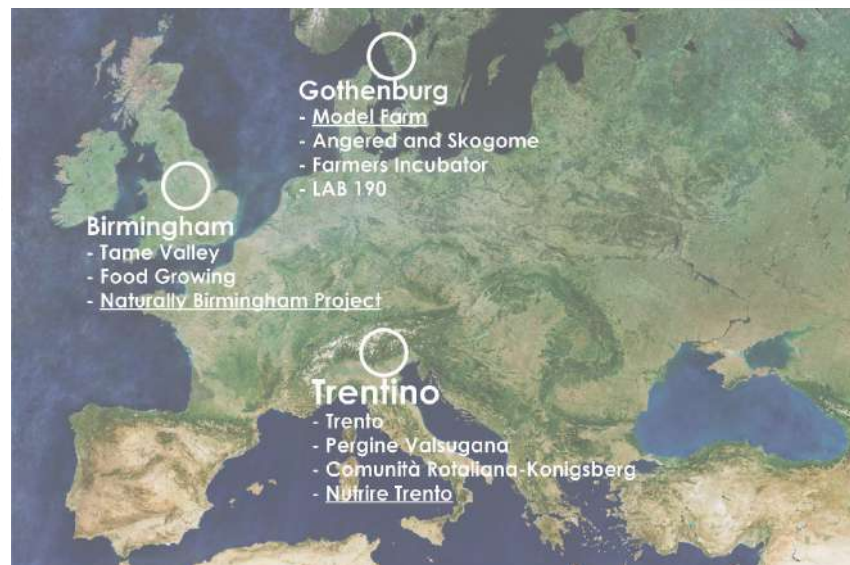
CARL: Initial Framework



SATURN

System and sustainable Approach to
virTuous interaction of Urban and Rural
LaNdscapes

Pilot cases



Sara Favargiotti
University of Trento - Italy

SATURN

System and sustainable Approach to
virTuous interaction of Urban and Rural
LaNdscapes

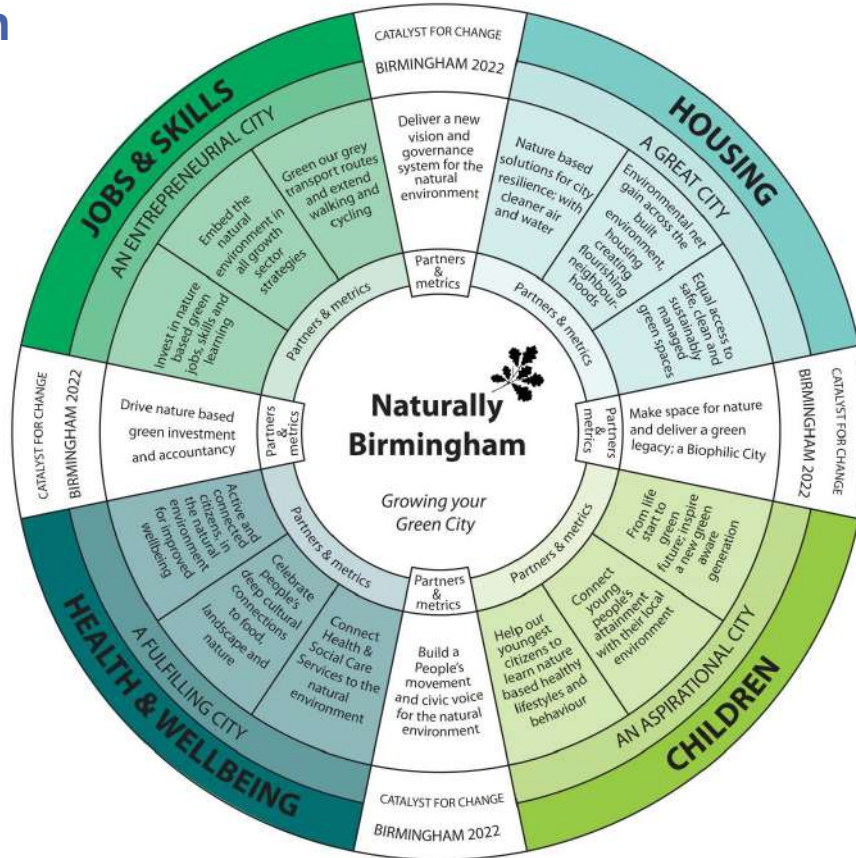
Birmingham HUB

Anastasia Nikologianni
University of Birmingham - UK



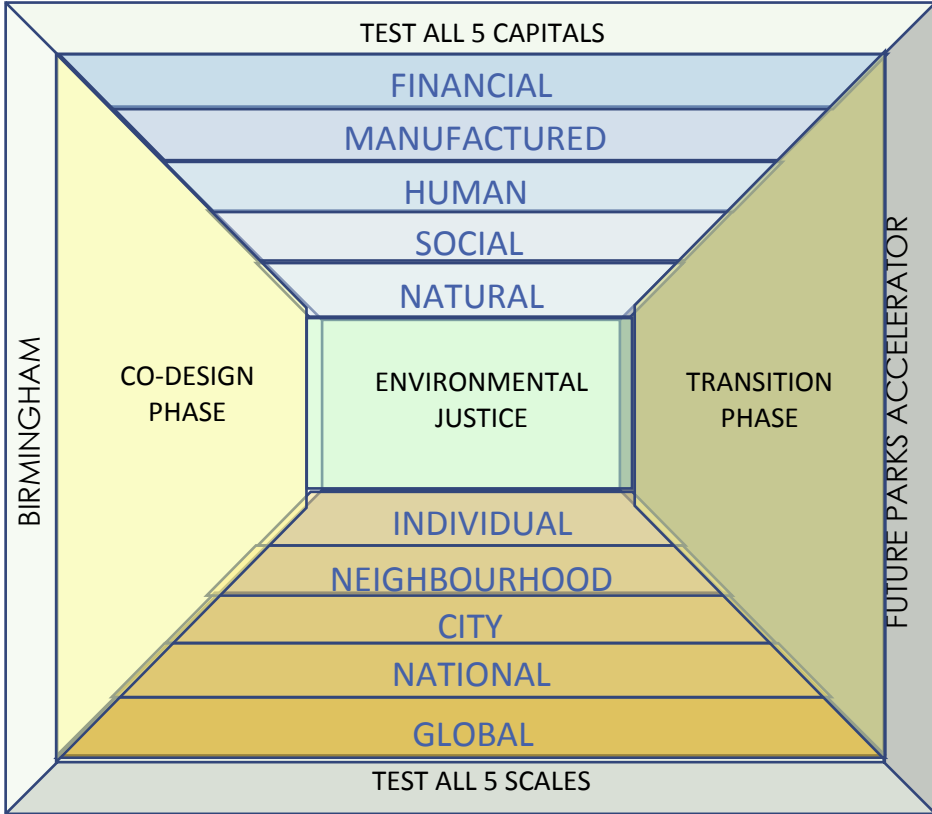
S
Y
S
T
E
M

S
P
A
T
I
A
L



Future Parks Accelerator Finance May 2020

Making the Invisible- Visible



Environmental Justice will be tested through policy and practice at 5 scales and its effectiveness will be valued through the 5 capitals.

Tame Valley Wetlands, West Midlands, UK

18



Image Courtesy Tame Valley Wetlands Partnership



Image Courtesy Social Farms & Gardens



Thanks for your attention!



Anastasia.Nikologianni@bcu.ac.uk

<https://eventi.fmach.it/saturn>

<https://www.facebook.com/Saturn.ClimateKIC/>

https://www.instagram.com/saturn_climatekic/

<https://twitter.com/SClimatekic>



SATURN

System and sustainable Approach to
virTuous interaction of Urban and Rural
LaNdscapes

Göteborg HUB

Martin Berg
City of Gothenburg - Sweden



The Model Farm

- A market garden in Gothenburg



Klara Hansson (Ebba Wilhemsson)

Urban farmer & Project Leader Stadsnära odling



SATURN 2019-2021, financed by EIT Climate-KIC.
1 of 4 pilot cases i Gothenburg together forming our ecosystem for new green entrepreneurs

Mission

The Model Farm is a highly productive small scale farm unit, providing food and education.

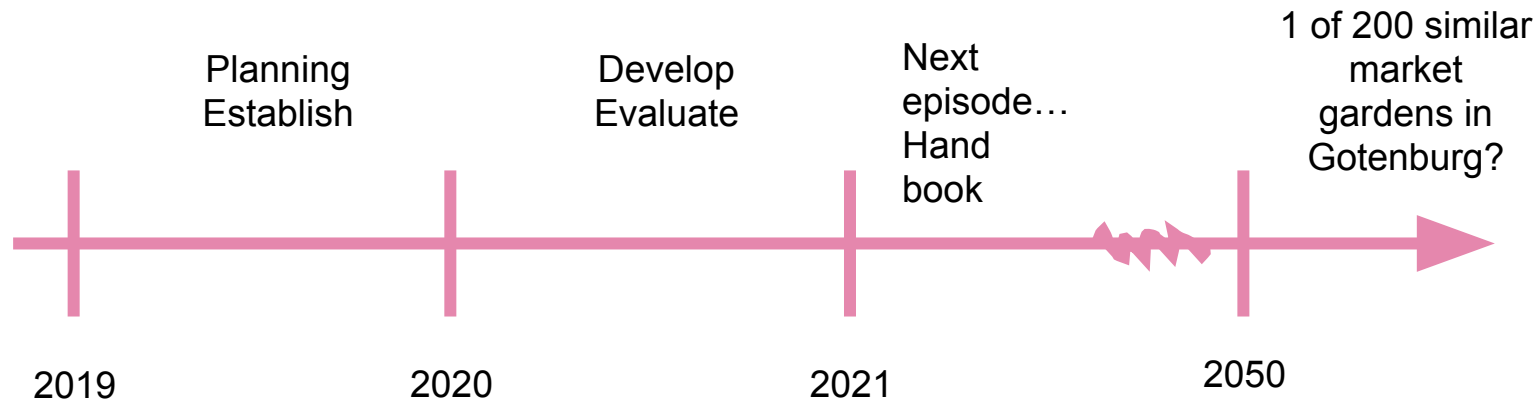
Vision

By showcasing both the farming and business model behind a sustainable and successful small scale farming enterprise, the Model Farm will serve as a driver for the integration of regenerative farming practices in the continuous evolution of urban and rural multifunctional landscapes.





Timeline





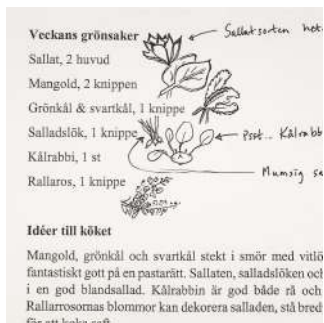


Deliveries

- 16 weeks, from July to November
- >1300 kg vegetables = ca 10000 portions of school food plates

1 portion = 30% av RDI á 400 g grönsaker

Skörd	1	2	3	4	5	6	7	8	9	10	11	12	13	14	15	16	
[kg]	190716	190723	190730	190806	190813	190820	190827	190902	190910	190916	190924	191001	191008	191014	191022	191106	
	1322,761	10,3	8,6	11,21	12,087	28,353	81,109	109,36	144,16	133,461	137,65	104,39	114,09	121,95	97,31	92,88	50,851



Follow us on @Modellodingen Instagram





Thanks for your attention!



martin.berg@fastighet.goteborg.se

<https://eventi.fmach.it/saturn>

<https://www.facebook.com/Saturn.ClimateKIC/>

https://www.instagram.com/saturn_climatekic/

<https://twitter.com/SClimatekic>



SATURN

System and sustainable Approach to
virTuous interaction of Urban and Rural
LaNdscapes

Trentino HUB

NUTRIRE
TRENTO



CAMPAGNA - CIBO - CITTÀ

**FEEDING TRENTO:
COUNTRYSIDE, PRODUCE, CITY**

**Francesca Forno
University of Trento - Italy**



Climate-KIC is supported by the
EIT, a body of the European Union



Nutrire Trento ("*Feeding Trento*")

The project formally began **in June 2017** as one of the activities under the **Unicittà memorandum of understanding** between the **Trento City Council and the University of Trento** and was preceded by a series of open meetings involving people already in working in this area, such as **producers, citizen groups and associations (including cooperative purchasing groups), researchers and administrators.**



The strategy



project agreement
between the
Municipality and the
University of Trento
signed on June 2017



stakeholder
engagement
through a round
consultation table
(from consumer
organizations to producer
organizations)



analysis of the
strengths and
weaknesses of the
local food system



pilot project
inception



The tools

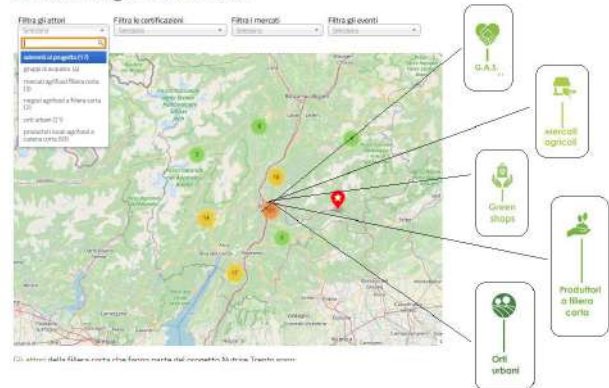


Multi-stakeholder roundtable

La mappa

strumento di informazione per valorizzare il rapporto diretto tra produttori e consumatori, riavvicinando campagna e città. Contiene tutti gli attori e i luoghi della filiera corta che aderiscono al progetto.

Gli attori e i luoghi della filiera corta



Digital participatory mapping



Co-designed multi site events



Special projects



Nutrire Trento has not stopped during the **COVID-19 emergency**, continuing its aims to identify ideas and solutions to improve the quality of the food for the city (i.e. lower environmental impact of food production, support local farmers, obtain healthy food for all).

Nutrire Trento #FASE 2 began in mid-May and will last two months. At present, the project involves about **50 families** and **12 local produces**. Activities include the completion of short questionnaires to monitor the progress of the project, a blog to keep communication flowing, zoom meetings and soon (now that it is again possible!) on-site visits to farms.





Thanks for your attention!



francesca.forno@unitn.it

<https://eventi.fmach.it/saturn>

<https://www.facebook.com/Saturn.ClimateKIC/>

https://www.instagram.com/saturn_climatekic/

<https://twitter.com/SClimatekic>



SATURN

System and sustainable Approach to
virTuous interaction of Urban and Rural
LaNdscapes



Marco Ciolli / Anastasia Nikologianni
University of Trento - Italy
University of Birmingham - UK



Climate-KIC is supported by the
EIT, a body of the European Union

The 3 Hubs

- ✓ Cities and Institutions collaboration
- ✓ Exchange of Knowledge
- ✓ Climate Emergency
- ✓ Transforming the Identity of Regions
- ✓ Food security
- ✓ Quality of Life
- ✓ Economic investments
- ✓ Farming entrepreneurship

Work Package 1

Stakeholder engagement and regional design (WP1A), Capacity Building (WP1B)

40

- ✓ Visioning/ Spatial Approach
- ✓ Framework
- ✓ Stakeholder Engagement
- ✓ Capacity Building and Training (for partners and cities)
- ✓ Policy evaluation – local authorities
- ✓ Awareness

Aims to re-connect citizens with the landscape, create a landscape identity and engage public institutions at a regional and city level.

Work Package 2

41

Building a comprehensive and adaptive Common Framework (WP2A); Testing and improving the framework in an iterative process (WP2B)

- ✓ Valuable guide for public and private landowners
- ✓ Toolbox creation for cities, regions and planners
- ✓ Identifying suitable pilots
- ✓ Testing the land use models
- ✓ Sustainable development
- ✓ Result as a proposed Common Framework based on tests and models

Identifies land use models and strategies for reconnecting cities to their surrounding areas.

The objective is to map best practises at a European level regarding sustainable land use models.



Thanks for your attention!



marco.ciolli@unitn.it

Anastasia.Nikologianni@bcu.ac.uk

<https://eventi.fmach.it/saturn>

<https://www.facebook.com/Saturn.ClimateKIC/>



https://www.instagram.com/saturn_climatekic/



<https://twitter.com/SClimatekic>



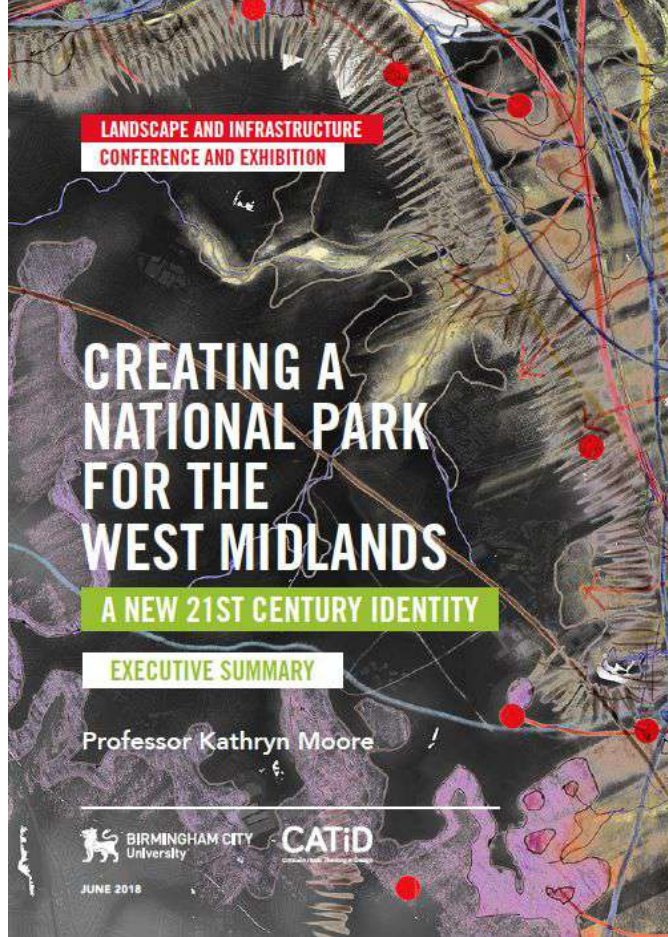
SATURN

System and sustainable Approach to
virTuous interaction of Urban and Rural
LaNdscapes

Birmingham HUB

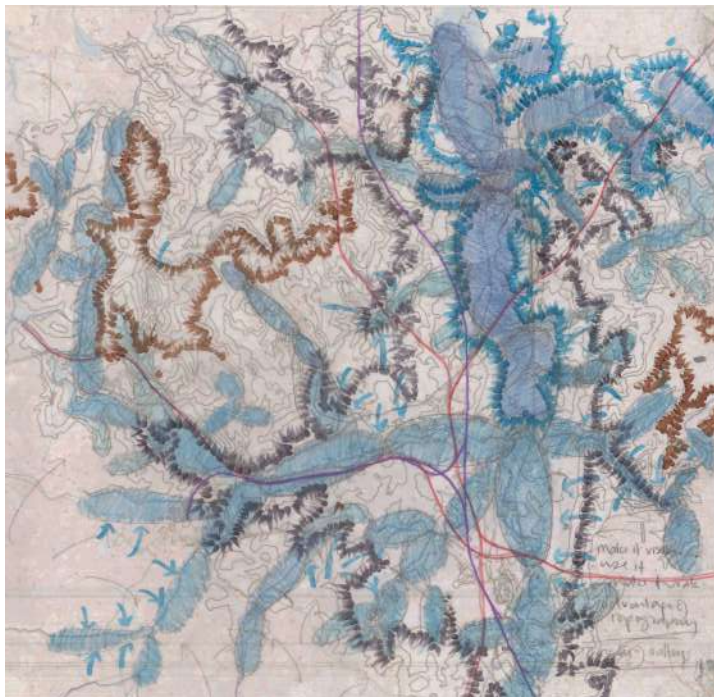
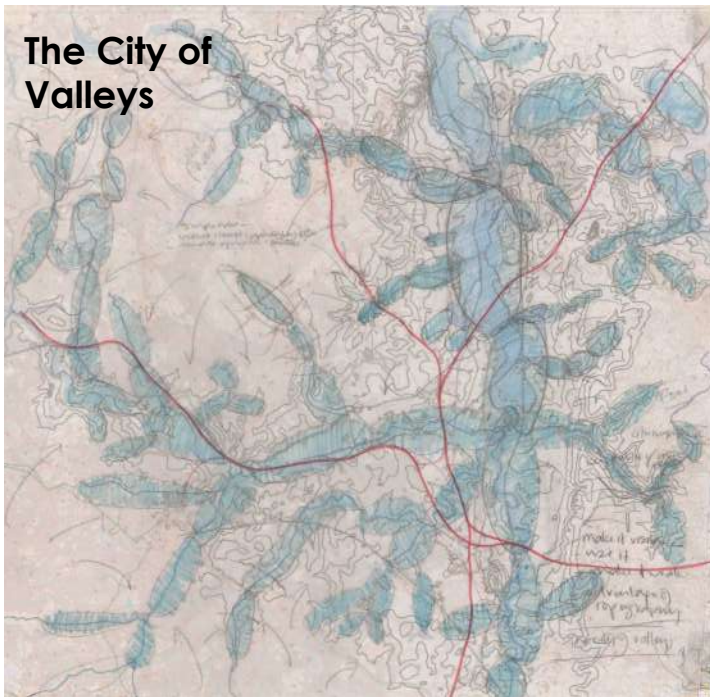
Professor Kathryn Moore
University of Birmingham - UK





A vision for a new kind of national park and a new 21st century identity for the West Midlands

The City of Valleys



“It’s like discovering the pyramids!”

“Birmingham’s answer to the Lake District!”

“Should be aligned to a regional strategic planning document or blueprint...”

Can we do this?

CITY MASTERPLANNING

46

Use the valley system as the ecological muscle of the region

In the heart of England, might we find the beginning of the long distance footpath to the North Sea?

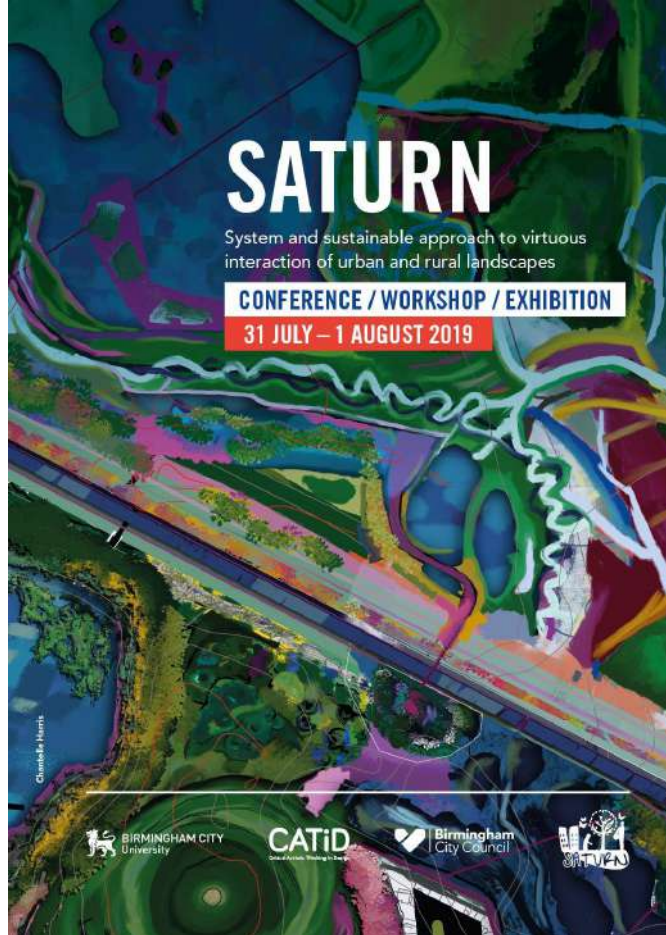
Only allow development above a certain level

Living not on the edge of the city but looking over an astonishing health resource

Giving the region a strategic advantage that quite literally comes with the territory

Consider models such as tax increment financing

A new National Park for the UK in the West Midlands



**Understanding the role of spatial
visions and development of case
studies**

**31st July/1st August 2019 with partners
from Italy and Sweden, supported by
Climate-KIC**

The West Midlands National Park to lead the region's green recovery

UNIVERSITY NEWS LAST UPDATED : 10 JUNE

48

The West Midlands Combined Authority has formally adopted the West Midlands National Park project as a key component of a post-Covid green economic recovery. With the youngest, fastest-growing, most diverse population in the UK, the imminent arrival of HS2, the hosting of City of Culture 2021 and the Commonwealth Games, the West Midlands National Park is a unique opportunity to re-discover a vast, hidden landscape that has been largely overlooked and undervalued for decades.

A game changer, it will become the benchmark to which others measure against and will demonstrate a truly holistic approach to the management of the environment in the most sustainable way for now and into the future.





Thanks for your attention!



climate@fmach.it

<https://eventi.fmach.it/saturn>

<https://www.facebook.com/Saturn.ClimateKIC/>



https://www.instagram.com/saturn_climatekic/



<https://twitter.com/SClimatekic>



SATURN

System and sustainable Approach to
virTuous interaction of Urban and Rural
LaNdscapes



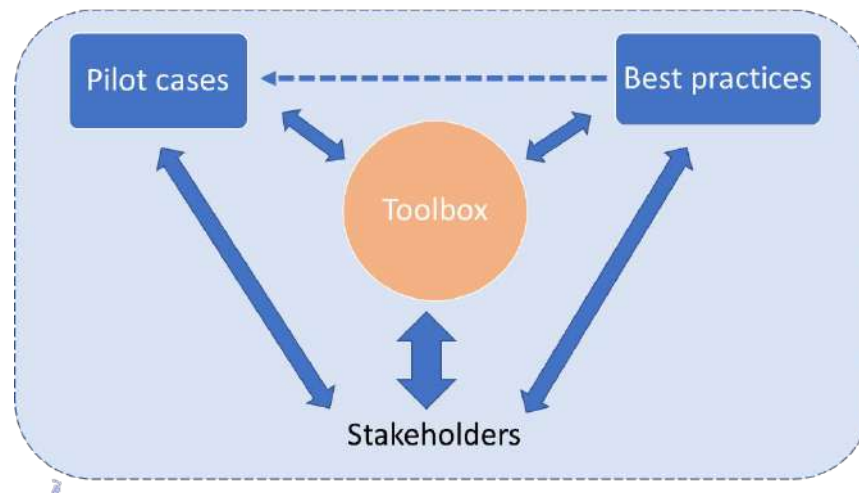
Anna Ternell
City of Gothenburg - Sweden



Building a comprehensive and adaptive
Common Framework (WP2A) and to test and
improve the framework in an iterative
process (WP2B)

WP 2A Building a comprehensive and adaptive Common Framework (Toolbox)

A guideline (manual) that in a pedagogic way explains how to increase urban-rural interaction in terms of sustainable land use. Target groups can be city planners, regions, land owners (private and public), entrepreneurs, education purposes.



Framework

- About 10 pilot case that includes several **tools** that are generic in nature and with the potential of inspiring other parts of Europe and globally.
- The tools will be collected in a **toolbox** which will be communicated in an accessible way. The aim is to enable the upscaling of the pilot cases as to work towards system innovation.
- The toolbox also includes tools from other projects and initiatives other than the pilot cases, these are referred to as **best practices**.

Pilot cases: to identify land use models and strategies for reconnecting cities to their surrounding

Gothenburg:

- Model Farm
- Test site Angered - Skogome
- Farmers incubator
- LAB190 – green industries and future land use

Trento:

- Rotaliana Agro-District - “Parco Agricolo della Rotaliana”
- Pergine Re-Connect Agro-Forest Land
- Nutrire Trento

Birmingham:

- Tame Valley
- Food Growing Birmingham
- Naturally Birmingham

Tools: A guide, handbook, movie or similar.

Gothenburg:

- Handbook in model farming
- Guide: Land lease model
- Guide for capacity building for green entrepreneurs
- Mapping of abandoned/unused land
- Governance model for urban-rural linkages
- System model of the ecosystem: Farmbox to hectare

Trento:

- Enhance whole connectivity
- Governance model - eco | socio | digital aspects
- Youth engagement and mentoring for business development

Birmingham:

- Capacity building tool/approach
- Institutional Development Tools and Tracking Methods
- Visual tool (maps)
- Stakeholder mapping

SATURN

System and sustainable Approach to
virTuous interaction of Urban and Rural
LaNdscapes

Break - 10 minutes

**Please think about and answer
to our SATURN's survey**



Climate-KIC is supported by the
EIT, a body of the European Union

SATURN

System and sustainable Approach to
virTuous interaction of Urban and Rural
LaNdscapes



Valerio Bruschi
EIT Climate-KIC - France

SATURN

System and sustainable Approach to
virTuous interaction of Urban and Rural
LaNdscapes



Christoph Brodnik
Austrian Institute of Technology - Austria



Climate-KIC is supported by the
EIT, a body of the European Union

Supporting SATURN

Developing a Theory of Change

- Strategise & assess systemic impact
- Communicate purpose and actions

Developing a monitoring and evaluation process

- For learning & prioritising
- Through Co-creation

Internal Capacity Building & Technical Assistance

- Replicable approach
- Promotion of ideas / activities elsewhere

What is a Theory of Change ?

- Strategy to prioritise actions & outcomes for achieving a goal
- Assess progress towards goals
- Communicate what a project does

What is a Theory of Change ?

- Strategy to prioritise actions & outcomes for achieving a goal
- Assess progress towards goals
- Communicate what a project does
- Based on system science concepts (used at OECD, EEA, etc.)
- Operationalising & translating concepts
- Linking portfolio of actions to leverage points



Christoph Brodnik

christoph.brodnik@ait.ac.at



SATURN

System and sustainable Approach to
virTuous interaction of Urban and Rural
LaNdscapes



Elisa Morganti
Hub Innovazione Trentino - Italy



Climate-KIC is supported by the
EIT, a body of the European Union



Thanks for your attention!



climate@fmach.it

<https://eventi.fmach.it/saturn>

<https://www.facebook.com/Saturn.ClimateKIC/>



https://www.instagram.com/saturn_climatekic/



<https://twitter.com/SClimatekic>

